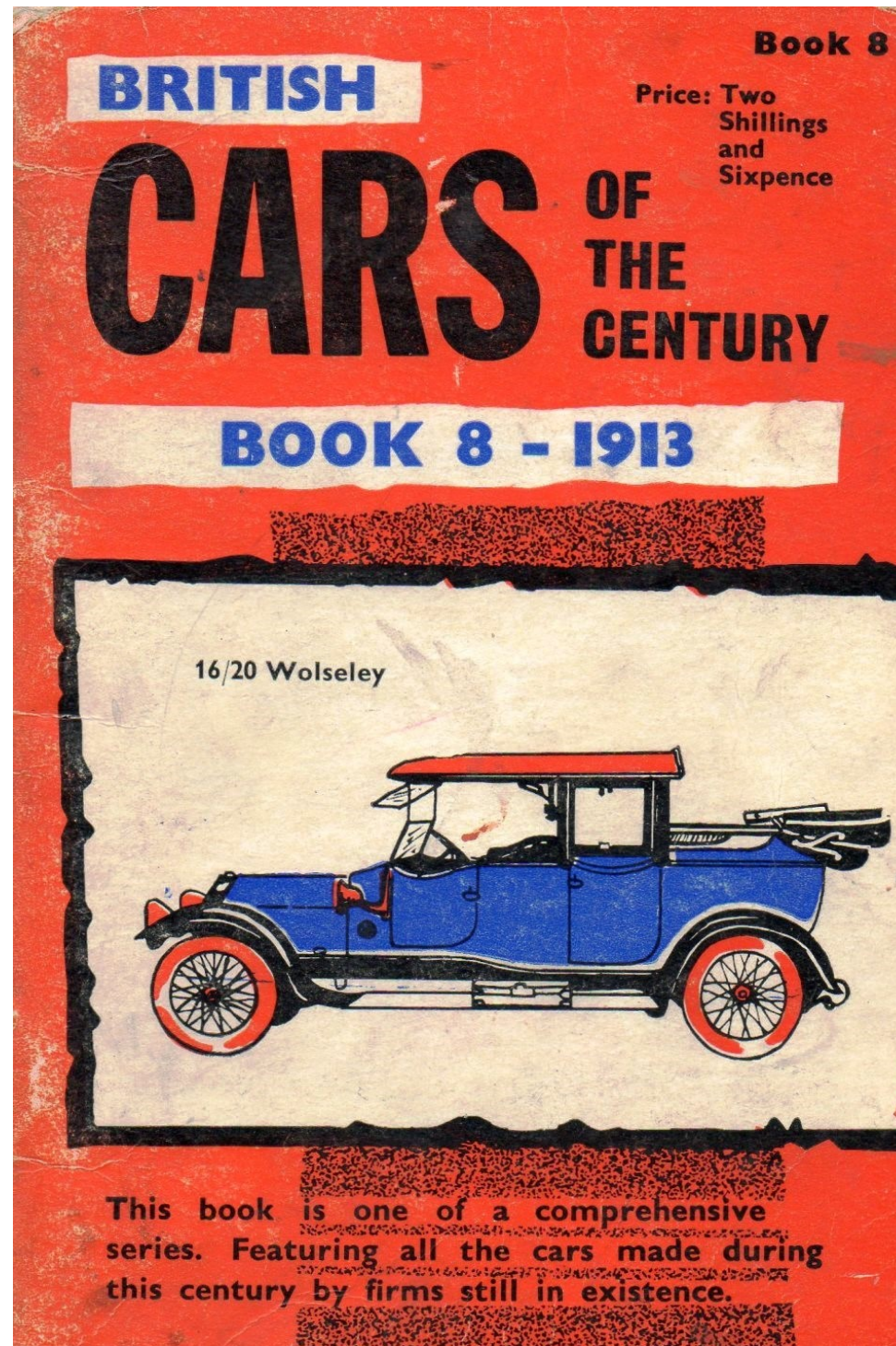
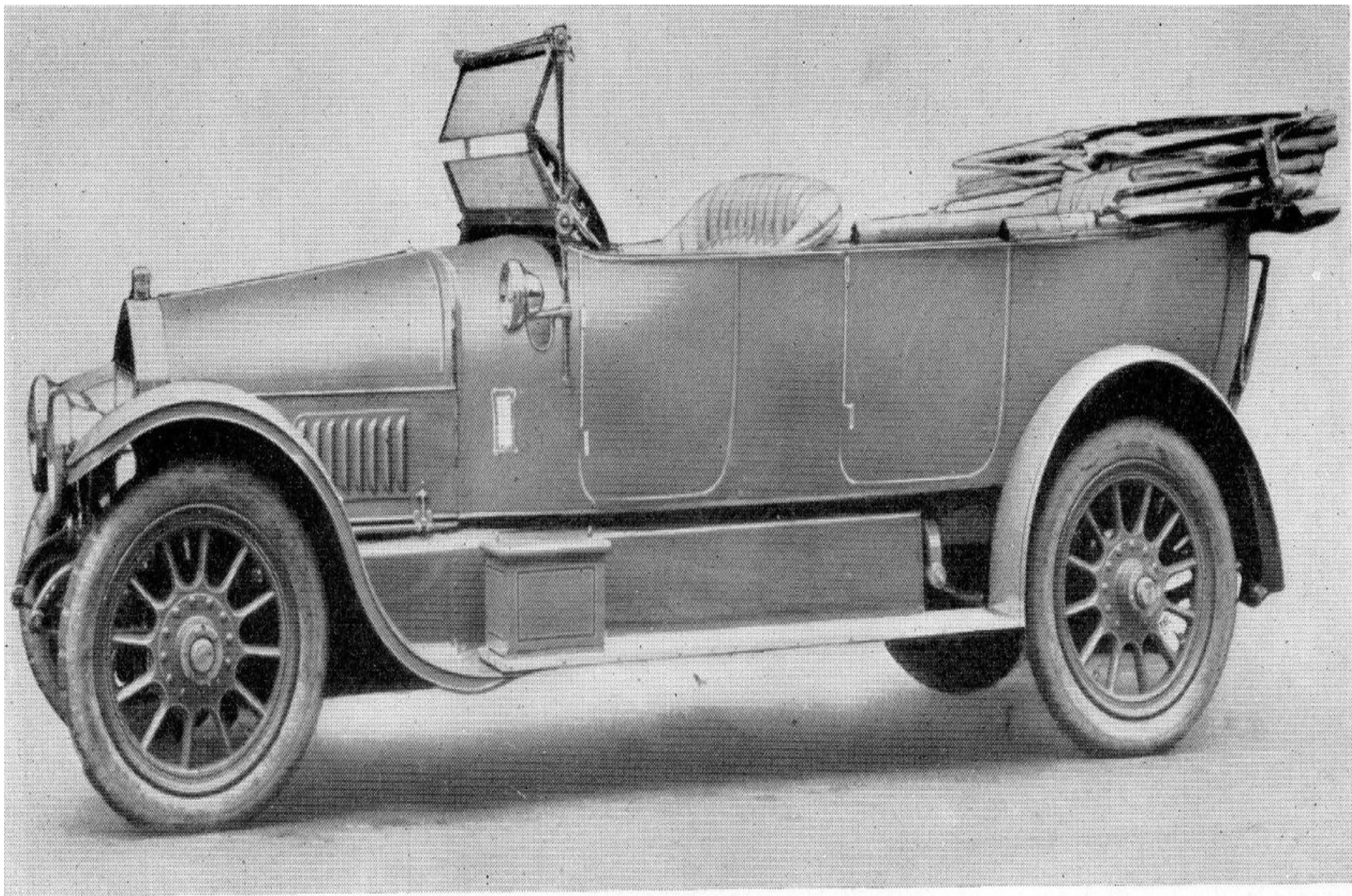


"CARS OF THE CENTURY"—1913



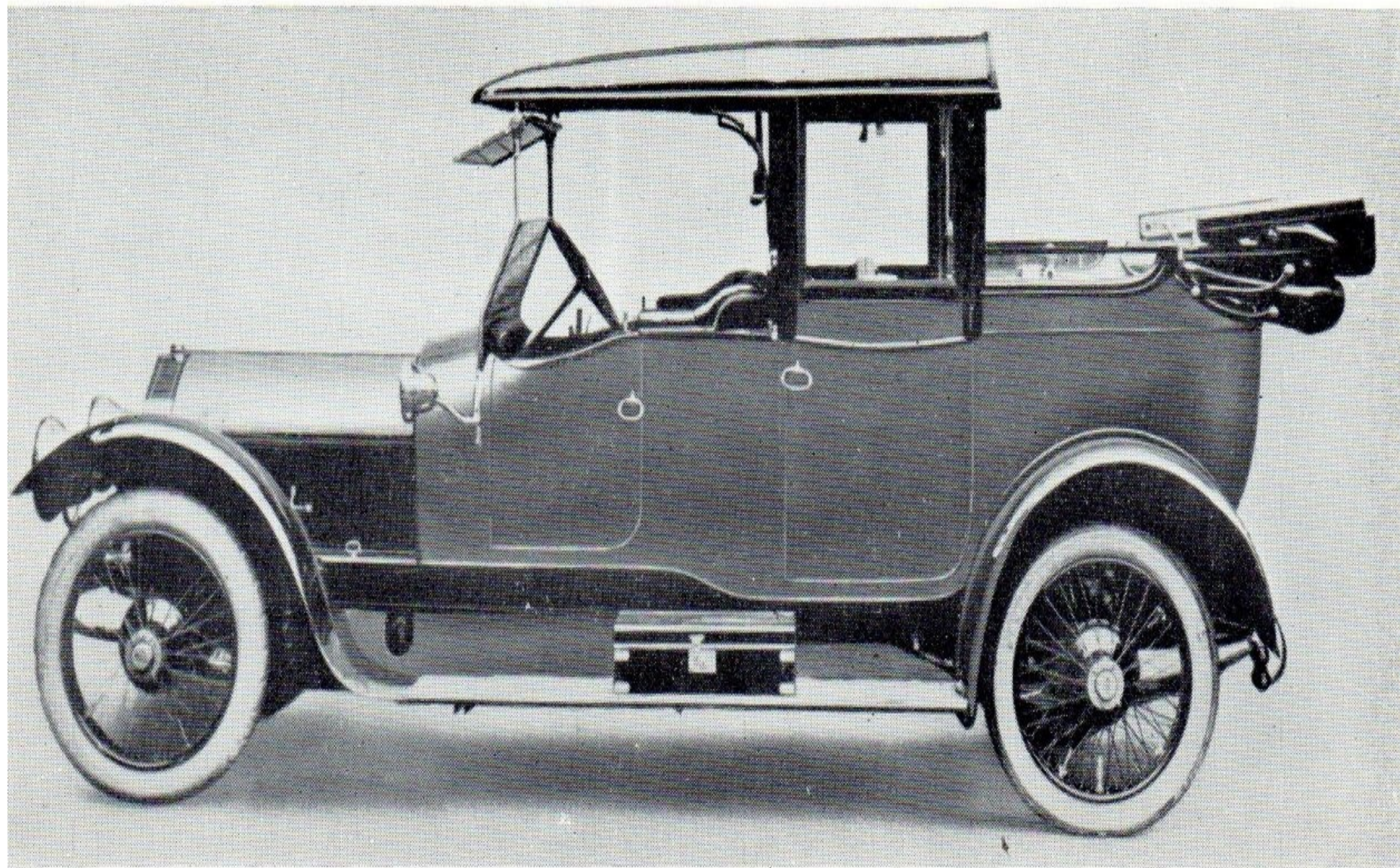


1913

16/20 Wolseley

reproduced by courtesy of The Autocar

We have commented previously on how the manufacturers always seemed to find difficulty in fitting the straight bonnets of the period on to the high solid bodies; and the result was often a rather ugly compromise. This model was fitted with a specially designed bonnet and dashboard, and the result is quite pleasing. A Kopolapso hood and C.A.V. lighting outfit were fitted. As the car was intended for India, special attention was paid to the ventilation.



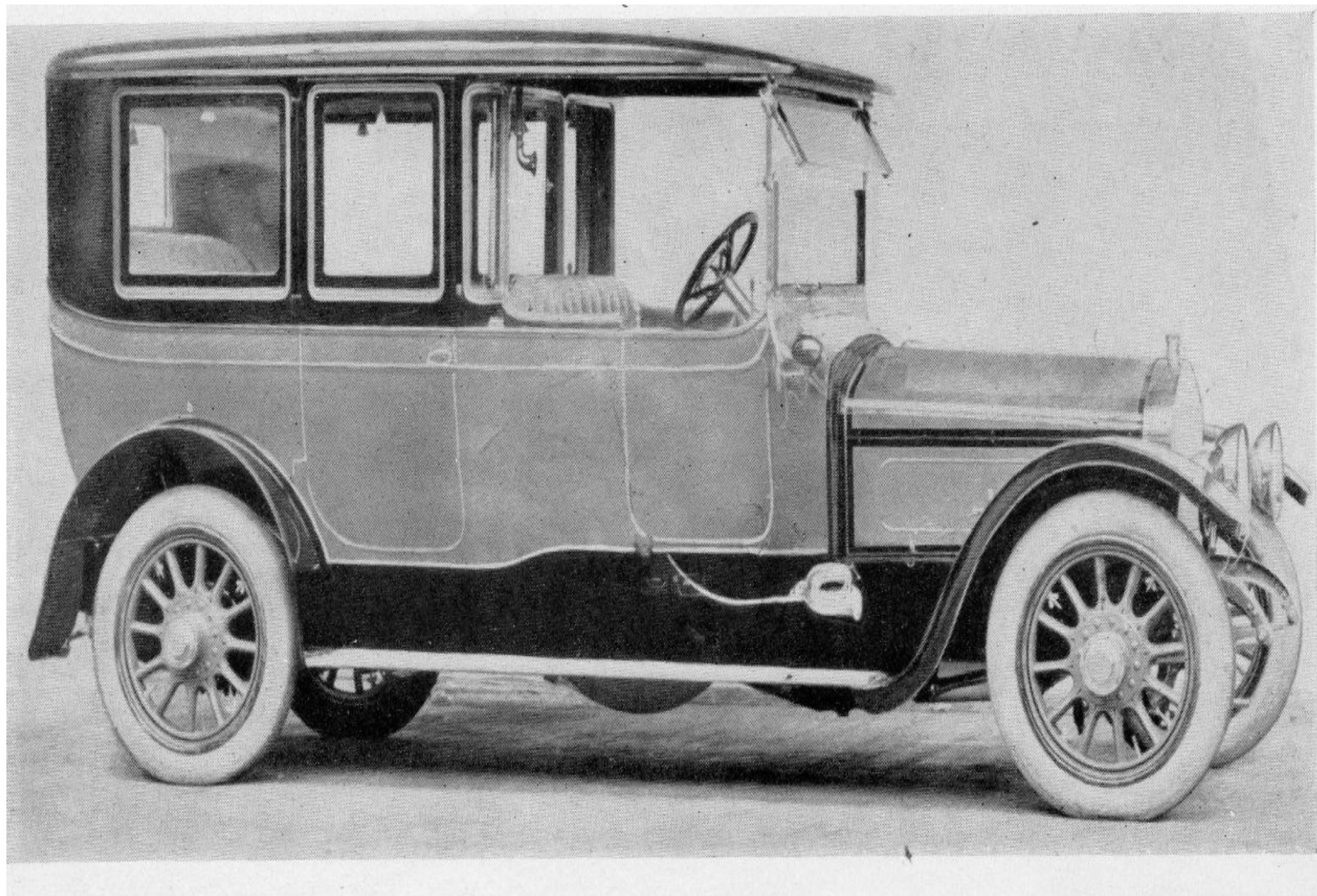
1913

16/20 h.p. Wolseley

reproduced by courtesy of The Autocar

Earlier in the book we showed a special 16/20, but this is more the orthodox version.

Note the brake hubs on the front wheels — a most unusual feature of the times.



1913

24/30 h.p. Wolseley

reproduced by courtesy of The Autocar

Apart from its obvious solidarity, no great comment is merited for this model.

The car had six cylinders, with bore and stroke 90 x 130, 4,961 c.c., magneto ignition, multiple plate clutch, Wolseley carburettor and four gears.