

"WHAT WOLSELEY OWNERS SAY" - MAY 1927—COURTESY ANDY PLUMMER

No. 786

May, 1927



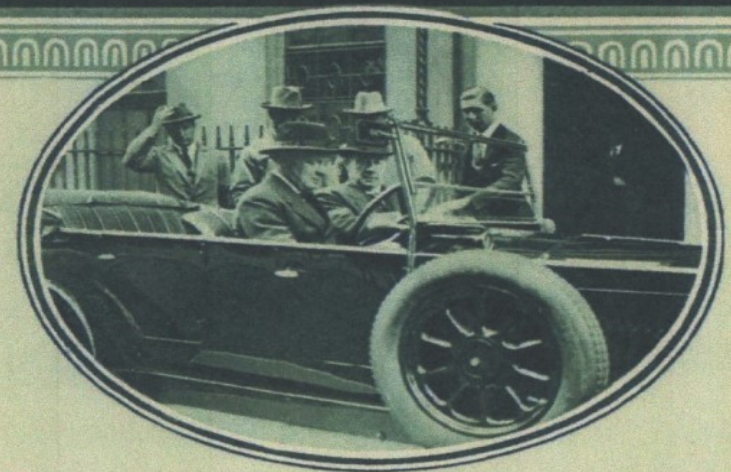
WOLSELEY MOTORS (1927), LTD.

Adderley Park, BIRMINGHAM

London :

Petty France, Westminster, S.W.1

WHAT WOLSELEY OWNERS SAY



*Mr. Winston Churchill taking
Mr. Baldwin for a run in his
Wolseley 11/22 h.p. Four-seater*

THE OAKLEY GARAGE & MOTOR WORKS LTD.

25, ST. GUTHBERTS, LONDON

What Wolseley Owners Say *about the 11/22 h.p.*

THESE entirely unsolicited opinions of owners of Wolseley 11/22 h.p. cars have not been written for publication, but are just *extracts taken from ordinary business letters* to us. They constitute a remarkable testimony to the lasting service which this smallest Wolseley model can be relied upon to render.

Long and reliable service has always been a marked feature of all Wolseley productions. The illustrations we give on the centre pages are a further striking proof of this.

Car No. 42010

"Since purchasing the car in August, 1924, I have covered over 30,000 miles over some very hilly and stiff country and have never had means to complain about anything as regards performance from your excellent car."

Car No. 46892

"I would like to say here that you are to be congratulated on turning out the "Best value for money" of any car in the world—my car has done 40,000 miles in two years, and though a little noisy, I think she is good for another 40,000."

Car No. 30307

"I hope the Wolseleys are still going strong with you. I have done 57,000 miles on mine, and twice this summer climbed Broadway Hill at 20 m.p.h. two up, second gear, my original test when she was new."

Car No. 45575

"On December 19th, 1924, I took delivery of an 11/22 Wolseley car. Since that date I consider that I have done record mileage, as up to the time of sending it into your London Service Depot to have the camshaft adjusted, and chain fitted, I have done 60,146 miles. Total repair bill other than the relining of brakes (once) and the replacement of fan belt, being the large one of eight shillings and sevenpence.

I am habitually a 'fast' driver, my general average being 28-30 m.p.h. so have really "caned" the car, and it seemed to revel in it. I can pass any standard light car on the road and my journeys over the counties of Oxfordshire, Bucks, Berks and Wiltshire, have given me plenty of opportunity to try the 'old bus' out."

WHAT WOLSELEY OWNERS SAY

Car No. 45754

"I feel that I must write you a short but sincere appreciation of the 11/22 Wolseley Four-Seater de Luxe delivered me on the 30th December last. On this car I have covered something over 14,000 miles, each one of these miles has been absolutely trouble free. I have never been let down once for any reason whatsoever over all that mileage. My car is exposed to all weathers, and the manner in which it has stood up to the elements reflects credit on the quality of the finish. The all-weather equipment is perfectly satisfactory; I like the designs of the side curtains; one gets an excellent view of surrounding conditions. This is very important in town driving nowadays. She picks up quickly and gear changing is always accomplished with ease and silence.

One thing more, my next car will be a Wolseley."

Car No. 45547

"The car is running splendidly, never had the slightest trouble with it, and it is on the road every day."

Car No. 47915

"I am more than satisfied with the remarkable service I am receiving with this car. Since taking delivery the car has covered a distance of ten thousand miles, being driven day after day under all conditions, and with the exception of the small sum expended on decarbonizing at 6,000 miles, and one new cover two days ago, not one penny has been expended on her for repairs.

My garage man informs me that the tyres are good enough for at least another two thousand miles, so between long tyre life and the fact that she does 38 to the gallon on N.B. Mixture, two up and luggage, she is a boon on the score of economy, and she runs sweeter to-day than ever."

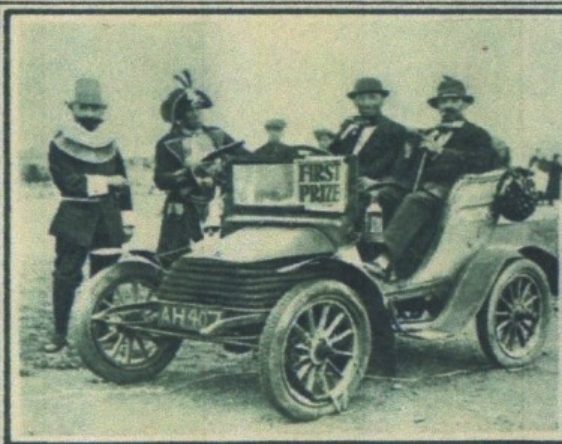
Car No. T.T. 7108 (A Lady Driver)

"I may tell you that this is my third "Wolseley," and my motto is, like so many other satisfied owners—"Once a Wolseley, always a Wolseley." My first car of this type, a 1915 16/20, still going strong and as quiet as ever a car could be, my second a 1925 11/22 two-seater which I have only parted with because I fell in line with the 1926 de Luxe model. I have driven her over 6,000 miles in 9 months in Devon and Cornwall, and not one second's trouble did I have, the engine was only decarbonised after 5,500, the tyres good for another 5,000, and petrol worked out at over 35 m.p.g. I want nothing better, for it is the easiest of cars to drive, and the cheapest of cars to run."

Car No. 70812

"I feel that I must write to express my appreciation of the car. The engine is wonderfully silent and has ample power, and the springing of the car has minimised the effects of the really atrocious roads one meets with frequently in this country [France]. I have just returned from 1,000 mile tour in Brittany and the Loire country. The car could not have served me better."

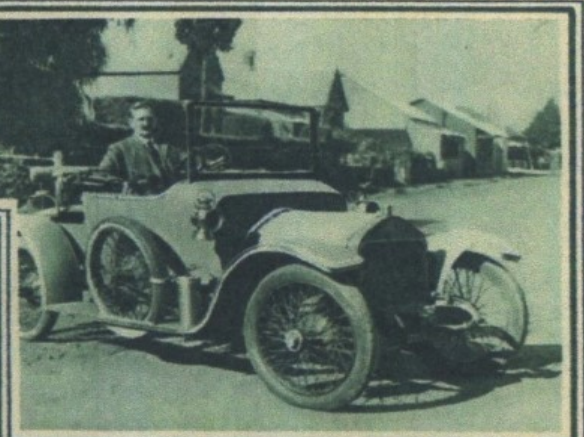
Remarkable Examples of Wolseley Reliability



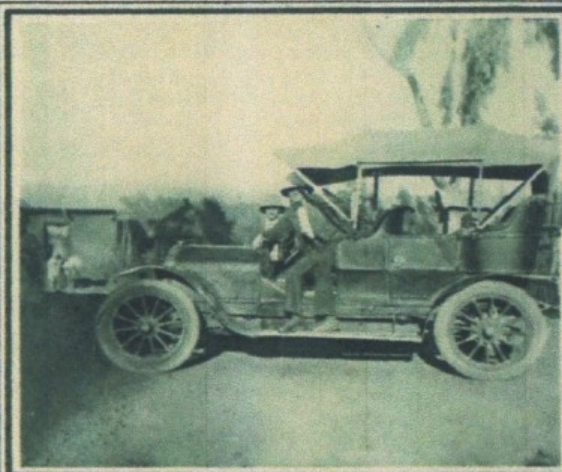
Built and sold in 1904, this ancient Wolseley took first prize in the Lowestoft Carnival in 1924. It was afterwards driven to London by the owner, and is still running.



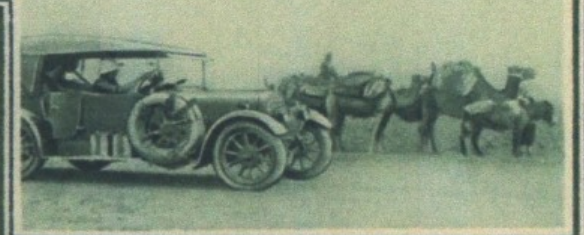
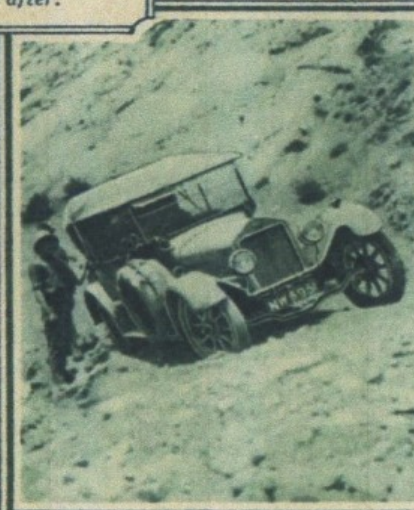
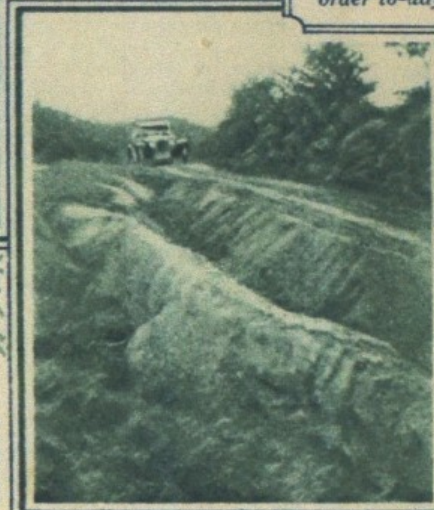
This Wolseley car won the 1,000 Miles R.A.C. Reliability Trial in the year 1900, and is in running order to-day—27 years after.



Dr. W. W. Hodgins of Bloemfontein has had this Wolseley 12/16 h.p. car in daily use since 1911, and claims that its total mileage to date is 250,000 miles.



This Wolseley car was driven overland to Abyssinia in 1907 and presented to King Menelek. Mr. C. F. Rey, travelling in that country in 1923, had the car loaned to him for use during his stay and took the above photograph. Despite rough usage, it was still running well.



In 1924, Major Forbes-Leith drove this Wolseley car from Leeds in England to Quetta in India—a journey of 8,500 miles overland, 3,000 miles without road or track, and 1,500 through desert. The car reached Quetta in perfect running order, and is still in daily use.

This 11 h.p. Wolseley, shown struggling through the Balkan country, was driven from London to Constantinople by two ladies, entirely alone and unattended—a striking proof of the qualities of the modern small car, and the modern Englishwoman.

Major Forbes-Leith encounters a piece of particularly difficult road in his remarkable journey.

WHAT WOLSELEY OWNERS SAY

Car No. 47228

"I should like to place on record my entire appreciation of the car, which is in my estimation the best value at present offered.

The wonderful springing, together with the excellent and most comfortable upholstery, makes the car a real pleasure to drive, practically all road shocks being eliminated.

Although I always have a full load, the engine has a wonderful reserve of power, and on hills, I have on several occasions passed larger cars which have had to change to a lower gear.

Your advertisements are right, the car is built up to a standard, a very high one."

Car No. 48023

"Having spent my holiday touring with the car, I feel it incumbent upon me to let you know the splendid way in which your product responded to every demand made upon it.

Although we were a party of three—and not small ones—on the little two-seater; though we carried luggage; climbed some of the stiffest hills in the country—Porlock, Countisbury, Parracombe and other noted Devonshire and Cornish heights; yet we travelled steadily and comfortably, with never a mishap or failure of any kind.

It is remarkable to me that with a small car and a load on these hills that my radiator never boiled, in fact it has been impossible to add more water for months now, it never seems to use up. Equally remarkable is the minutely small consumption of engine oil in the sump. In spite of the continuous heavy going on certain roads, examination at the end of each day revealed exceedingly little oil required, some days none at all."

Car No. P.E. 5571

"I have much pleasure in informing you that I have just completed a tour of 1,700 miles over the battlefields of France and Belgium doing an average of 120 miles a day—many of the roads were little more than cross country tracks. There were four passengers averaging over 11 stone a piece, each with a full sized suitcase. My car went splendidly throughout, and apart from two punctures, never caused us a moment's delay. Although there was a great deal of hill climbing the petrol consumption averaged just over 30 miles to the gallon.

I need hardly say I am delighted with the performance of my car."

Car No. 70133

"I wish to testify to the excellence of the 11/22. It leaves nothing to be desired in general performance, sturdiness, and liveliness. At all times it stands up to any demand made upon it and throughout it is a sound proposition. My average fuel consumption (long journeys) was 34.5 m.p.g. and (in town) 29.5 per gallon."

WHAT WOLSELEY OWNERS SAY

Car No. 43262

"I feel that I must congratulate you on the merits of my Wolseley car (10.5) which has just returned from Scotland. I left London 10th October, and returned Saturday, October 24th, having covered 1,423 miles (London and Aberdeen and back), covering on an average 200 miles a day without incurring any trouble, in fact I had no need during the whole of this journey to use the spanner. This journey in my opinion proves what remarkable cars the Wolseley people turn out.

This car in eleven months has covered 17,000 miles, and its engine has never been taken down. I might mention that 17,000 miles was covered before this journey to Scotland was undertaken.

This letter is quite unsolicited, and you may use same for any purpose you may wish. For a car of this description (taking into account the mileage already covered) I think its performance phenomenal.

I shall not hesitate to recommend my numerous friends to buy a Wolseley car, should they contemplate purchasing a car at any time."

Car No. 70284

"I should like to take this opportunity of expressing my appreciation. I have done a large amount of touring during my leave and have never had the slightest trouble with it. The best performances were a run from Milnthorpe (Lancs.) via Lake District to Aberdeen, 300 miles, in ten hours driving time in one day, and climbing the Lecht (Corgarff to Tomintoul) with a full load; and she was as speedy at the end of my leave as when I bought her. I could not have wished for better service from a car of the size."

Car No. 46982

"I should like very much to express my entire satisfaction with the 11 h.p. car I purchased from your local agent. The car is reliability itself and I have done over a thousand miles a month without a semblance of trouble since purchasing. Starting in this weather from freezing point has never taken me more than a few seconds, and the springing, braking, and engine efficiency are alike excellent."

Car No. 44361

"I have now done 19,500 miles on this car—the mileage includes journeys between Haywards Heath and London twice daily during two Railway Strikes, and numerous journeys to Cornwall and back. During the Railway Strike in May last the car carried four passengers (grown-ups) daily and proved invaluable.

The car has, as yet, never 'let me down' on any occasion, and what it can do when fully loaded is a revelation to many."

Car No. 39105

"The Car has proved a real reliability car and not on a single occasion has she let me down on the road. The total mileage done is 36,900 miles. I attend to her entirely myself, and being far from a mechanic, this shows that she must be sound and simple in design."