

CELEBRATING  
60 YEARS OF THE  
WOLSELEY REGISTER  
IN 2024



# WOLSELEY WORLD

*The Journal of the Wolseley Register*

ISSUE 227 • JANUARY / FEBRUARY 2024



[www.wolseleyregister.co.uk](http://www.wolseleyregister.co.uk)



# Editor's Corner

Amy Egan, Editor [6547]

I hope you all had a good Christmas and New Year. Details of lots of events for 2024 are coming in thick and fast, so get your diary out and start planning the year ahead!

For many, the season kicks off with Drive it Day. Most of the regions have planned something but you may choose to do something as an individual – it's all about showing that our cars have a place on today's roads. Please do share your photos and stories with me for inclusion in the May/Jun magazine.

I also hope that you will find at least one of the '60th anniversary' events to join in with. The opposite page shows an overview of everything that is planned so far, and you can find more about each one on the respective regional pages or by contacting the regional rep to discuss.

---

**Cover:** A Wolseley 12/16 hp A4, previously unknown to the Register. It is currently in a privately-owned museum in South Africa. See pages 15-17. *Photo courtesy Mike and Wendy Monk.*

## ISSUE 227: JAN / FEB 2024

- 04 Chairman's Report
- 05 Contact Details
- 08 Welcome Aboard
- 10 FBHVC Matters
- 11 Letters and Emails
- 15 An unknown Wolseley
- 17 21/60's 90th birthday
- 20 Annual General Meeting
- 21 National Rally 2024
- 27 Vintage and Classic Spares
- 29 Archives update
- 30 NEC Restoration Show
- 32 Classified Adverts
- 34 Regional Contacts
- 35 Out and About
- 44 Three men and a 6/80



/wolseleyregister

**OVER 1,600 FOLLOWERS!**

**2024 magazine deadlines:**

8 Mar, 3 May, 5 Jul, 6 Sept, 8 Nov

---

**'Wolseley Register' and 'Wolseley World' are registered trademarks of the Wolseley Register.** Copyright of all articles, pictures and other material in *Wolseley World* is with the named author of the material or by default the Wolseley Register. No unauthorised reproduction, in part or in whole, is permitted without express permission. Permission should be sought from the Editor in the first instance.

---

**PRINTER: The Lavenham Press Ltd** [www.lavenhampress.co.uk](http://www.lavenhampress.co.uk) ☎ 01787 247436

# Letters and Emails

## Wedding Wolseley

Martyn Eustace [4286]

Last September, our youngest son Robert married Charlie. A timely wedding to also celebrate the 60th anniversary of our Wolseley 1500 which has been in the family since it was purchased by my Father in 1963.

Still going strong, but I'm afraid not used as much as it should be. All overhauled and renovated about five years ago and will have a few more years before a further 'look under bonnet' is required.

Best wishes to you and all readers.





## Winter starting Paul Cook [7643]

**B**UD, Lady Nuffield's Wolseley Eight, is like many of us and doesn't enjoy getting going on cold damp mornings. Not having been started for over a month and without the comfort of the new 'Carcoon', we were unable to start up in the conventional way so had to resort to the tried and tested push start.

We were impressed by the energy and enthusiasm from Steven, the new property manager, and Teri the conservator, in helping BUD come to life again. I'm pleased to say a warm-up run locally found BUD performing well.



As well as Morris-related gifts at Nuffield Place, the National Trust has produced small pin-stud badges for many properties highlighting a unique point of each place. I was pleasantly surprised to find that BUD is the star on the Nuffield Place pin. The detail is amazing, even down to a readable number plate. They are less than £5 donation each, so if you've got an Eight it would be a great addition to your car's story.

Wishing you happy and trouble free motoring in 2024 and hoping to see you at Nuffield Place. ([www.nationaltrust.org.uk/visit/oxfordshire-buckinghamshire-berkshire/nuffield-place](http://www.nationaltrust.org.uk/visit/oxfordshire-buckinghamshire-berkshire/nuffield-place))

Remember, if you plan to visit the property in a classic car, do phone ahead (☎ 01491 641224) to arrange to park directly in front of the house.



## Greetings from Switzerland

Matthias Stahel [4017], Austin-Morris-Wolseley-Freunde Schweiz

**H**ello Wolseley friends. We just received the latest issue of the *Wolseley World* magazine. Many thanks. A great edition again, congratulations to everyone who worked on it.



We love reading your articles and we sometimes translate them into German for our non-English speaking members.

I attach a picture of my Hornet and my Fourteen having a picnic in the countryside last summer.

---

## Pedal car in Australia

John Mallia [6614]

**I** noticed the story about pedal cars in the last *Wolseley World*.



I happened to come across this car in an antique shop in Castlemaine Victoria, Australia.

It was about five years ago, and the asking price was \$1500.00 AU.

## More Wolseleys on YouTube

Michael Seaward [7273] and Amy Egan [6547]



In December, FuriousDriving published a review of a 1938 Wolseley 14/60 on its YouTube channel. In the first week, the video had 7,900 views, 80 comments and nearly 1,000 likes.

The current owner is not a Register member. Other Wolseleys featured by this channel are an 1100, Janice Hollick's 6/90, and Andrew McAdam's 18/22 'Wedge'.



Watch them all at [www.youtube.com/furiousdriving](http://www.youtube.com/furiousdriving).

---

## List of Recorded Vehicles continues to grow

Colin Briggs [5006]

During 2023, 53 Wolseleys have been added to the Register's List of Recorded Vehicles (LoRV). They are a wide array of models, and were mainly found on eBay adverts (thanks to Chris Arnold for monitoring this). The total is about half the number of that of each of the last few years, so maybe there's not that many left to discover now?! The LoRV is available to all members (once logged in) through [www.wolseleyregister.co.uk](http://www.wolseleyregister.co.uk).

---



# Out and About in the Wolseley World

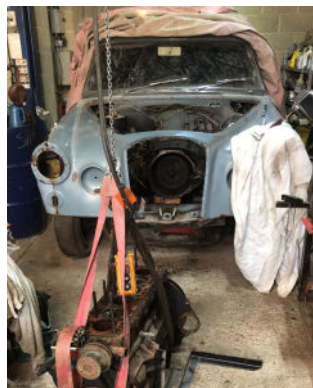
## INTERESTED IN SETTING UP A NEW LOCAL GROUP?

If you'd like to start something to get Wolseley enthusiasts together in your area, Groups Liaison Officer Chris Arnold can help spread the word to local members. ☎ 01945 587004 ✉ [groupliaison@wolseleyregister.co.uk](mailto:groupliaison@wolseleyregister.co.uk)

## SOUTH EAST REGION Stewart Payne [1612]

The arrival of a new year brings with it the hopes and anticipations of journeys resumed and the prospect of the rally season ahead, as we take our old cars out on the road again. But for some, it brings the frustrations of mechanical issues yet to be resolved. South East Region members, along with many others I am sure, have their fair share of the latter. The clatter of dropped spanners, the curses on discovery of rounded-off nuts and bolts, and the disappointment of recurring problems that stubbornly refuse to be solved, is all a part of ownership of our aging motors. Usually, it is worth it in the long run as we finally venture out with a wary eye on temperature and oil pressure gauges but happy to be on the road again on our splendid Wolseley motors.

John Worth in Hertfordshire, whose fine collection of classics includes Lord Nuffield's 25HP Drophead Coupé, his 1975 18/22 'Wedge' and his special 1966 Heinz Hornet soft-top, reports: "No Christmas outing for me this year: too wet for leaky convertibles and the Wedge needs a new vacuum advance/retard." Fortunately, this is not a major issue and Register members attending this year's National Rally in August, based around the Shuttleworth aeronautical and automotive museum, will be able to see his Wedge and his many other cars as he has kindly agreed to open his private collection. I've already had this opportunity, and can tell you a visit to admire his wide range of classics in a lovely setting is an opportunity not to be missed.



A car unlikely to make it on to the road in 2024 is this 1966 6/110 Mk II automatic which belongs to Martin Cooper and his son Jacob, from Kent. It's been stored for more than 30 years, and the pair have just embarked on its restoration. Martin laid the car up after partially seizing the engine "being the naïve youth I was." They have rebored the engine and fitted new pistons, and other mechanical work is well under way. →

However, the bodywork presents a bigger challenge, the car having been stored outside for part of the time. Corrosion has had a “massive impact” and a great deal of welding and patching will be required, a task they intend to undertake themselves before having the car professionally repainted.



Roly Watson, from Bucks, as previously reported, continues with trials and tribulations in his 1938 16/65 and his fortitude in persevering is to be admired. On the positive side, he has managed a day's filming in London with his 6/80, further proof of the popularity of Wolseley cars from the 40s and 50s on film and TV locations. But the 16/65 is “in bits with tools all over the wing and bulkhead” as work on resolving engine issues stalled over the winter months. Further hindered by medical issues and keyhole surgery, he said:

“I have survived, and I hope to get back to tinkering on the car in the next couple of weeks.”

Simon Todd, from Essex, contacted me to say: “I would like to find out more about the history of my 14/56. I bought the car last year and was told it has appeared in episodes of *Foyle's War* and *Poirot* when it was still in its original black colour.” It has since been repainted and was used as a wedding car in the Blackpool area.



Since acquiring it, Simon has enlisted the help of the Register's technical adviser Dave Palmer to deal with oil and fluid leaks and has some steering issues to attend to, but described the car as largely original and in good order. If anyone knows more about the car's past, please contact Simon (✉ [simon.todd2@btinternet.com](mailto:simon.todd2@btinternet.com)).

Jeffrey Bridges, in East Sussex, reports that he has just serviced his 1958 6/90. It was “quite a task,” he said, adding: “strangely, wheels and brake drums seem to get heavier year by year.” He will be taking his car to the **Cars at the Castle rally at Hever Castle, Kent, on Saturday 15 June**, and said he was happy to coordinate if any other Register members would like to join him (✉ [j.bridges815@btinternet.com](mailto:j.bridges815@btinternet.com)).

Stan Wright, from Kent, said that replacement cylinder heads fitted to his 15/50 “proved so unreliable that I and the car had become well known to local RAC patrols. So much so that I was told they were in competition with each



other to see who could tow my car the furthest”. However, with help and advice from Geoff Bennett, one of the Register’s technical advisers, he sourced another cylinder head which has been recommissioned and fitted. “Hopefully it will be workable and get me to local shows this year”, he said.



Finally in this round up, an appeal for help from Richard Brown from Essex regarding exhaust smoke problems with his Nine. Its engine has been completely overhauled – rebored, reground and new pistons, bearings and pump fitted and rings returned to original positions – to try to solve the smoke issue.

“The car runs very well and starts easily, but it is still very smoky”, he said. He can provide a detailed analysis of the issue if required. Do contact him if you can help (✉ [r.brown585@btinternet.com](mailto:r.brown585@btinternet.com) ☎ 07947 166070).



### 60TH ANNIVERSARY PLANS: 18-19 MAY

We have decided to join the Dorset Branch of the Morris Minor Owners Club at their annual visit to the Beaulieu Spring Autojumble. Of course, members from any Region are very welcome.

Classic cars can be displayed on either or both days but should be in place by 8:30am as there can be no vehicle movement during the Autojumble public opening times. £15 per vehicle covers entry into the Autojumble and Museum complex for two adults and up to three children on both days which is a good saving on standard admission rates. Free camping is available (with basic facilities) on Friday and Saturday nights but must be pre-booked. A Saturday evening meal is bookable at £16 per head (details on entry form).



Entry forms are available from Graham Ryder (☎ 0121 445 1872) or downloadable from the Wolseley Register 60th Anniversary Events web-page. Entry passes and directions will be posted about two weeks prior to the event. *Note the Beaulieu International Autojumble will be held on 14-15 September – a little later in the month than usual.*

## SOUTH AND WEST WALES Ernest and Janet Jones [6955]



**W**e are planning a 'special' weekend in the Cardiff area, starting on Friday 7 June at the Miskin Manor Hotel, Pendoylan Road, Pontyclun, Cardiff (CF72 8ND). This is a Grade II listed, Country Mansion type of building in perfect condition and set in 25 acres of parkland with immaculately manicured gardens. It offers luxurious accommodation at sensible prices and complemented with traditional tasty food.

**ACCOMMODATION RATES:** Classic Grade bedrooms. Double £110. Single occupation £100. These rates are for bed AND breakfast, with choice of continental or a full cooked meal. Dinner will be available at the restaurant. Ample and safe car parking at no extra cost. The same rates apply if you wish to stay a few days either side of the weekend. We've provisionally booked 10 rooms which are available first come, first served. No deposit, just full payment on check-in. Please contact the hotel direct (☎ 01443 224 204) and mention 'Ernest at the Wolseley Register'. Try to speak with Trudy who is our main contact, although they are all very helpful!

**SAT 8 JUNE:** Approx 10-mile drive to the Transport Museum at Barry, with the chance to see the Summer Fair at Barry Island as well. After coffee, it'll be another 10-mile drive to St Fagans for the National Heritage Museum of Wales. Free entry, and a very good café for lunch. This is a spectacular attraction, with something for everybody. Back to camp for an evening meal.



**SUN 9 JUNE:** We have booked a two-hour guided tour of the Royal Mint at Llantrisant – known as the 'Royal Mint Experience' starting at 11am. It's a chance to see where all the coin money is manufactured (not only British). I have negotiated a discounted entry fee if our group has 15 people or more, but this may be subsidised further by the Register's 60th anniversary events fund. A midday meal will be available from the café here. There are plenty of other attractions you may choose to visit that afternoon, such as Dyffryn Gardens (National Trust), The Vale Hospitality Centre, Castell Coch and Caerphilly Castle.

Please contact us (☎ 01267 233229 / 07889 847825) for more details and to let us know if you plan to join us. Six couples have already confirmed.

## SCOTTISH GROUP Michael Seaward [7273]



### 60TH ANNIVERSARY PLANS: 13-14 JULY

**W**e are planning a special gathering at the Scottish Transport Extravaganza at Glamis Castle. It is a two-day event, but the main and busiest day is the Sunday.

However we encourage anyone wishing to make a weekend out of it to attend both days. There are plenty of hotels and B&Bs in the surrounding area which has some very special scenery.

We would like as many members as possible to attend this event, regardless of the condition of your Wolseley. So if you have never been to a gathering before this is definitely a must-do and you will be made most welcome. Glamis is surely the premier classic car event in Scotland! In the first instance, please let Dick Peters know if you are interested (✉ [dicky3600@hotmail.co.uk](mailto:dicky3600@hotmail.co.uk)).

---

## EAST MIDLANDS REGION

Graham Ryder [4746] with Nev Holmes [6290]



### 60TH ANNIVERSARY PLANS: 24-26 AUGUST

**W**e will mark the Register's 60th anniversary with a stand at the Earls Barton Transport Show. This free-to-enter event will be held at Whites Nurseries, Earls Barton, Northampton (NN6 0EP), over the August Bank Holiday weekend. There will be the usual array of vehicles, trade and

craft stands, beer tent etc. Free camping space is available all weekend. Entry forms are available from Graham Ryder (✉ [midlands@thewolseleyregister.com](mailto:midlands@thewolseleyregister.com) / ☎ 0121 445 1872).

---

## SOUTH WEST REGION

Graham Ryder [4746] with Geoff Bennett [923]



### 60TH ANNIVERSARY PLANS: 20-21 JULY

**T**he Market Lavington Vintage Meet and Family Fun Weekend (The Elisha Field, Drove Lane, SN10 4NT) is a **FREE TO ENTER** weekend event with **FREE** exhibitor camping. Please join our club stand on either or both days.

Entry forms are available from Graham Ryder (✉ [midlands@thewolseleyregister.com](mailto:midlands@thewolseleyregister.com) / ☎ 0121 445 1872) and must be returned to him by 1 June. If you have already booked direct, please advise us so we can ask the organisers to include you with our booking.

---



## EAST ANGLIA REGION Chris Arnold [6441]



### 60TH ANNIVERSARY PLANS: 6-7 JULY

**P**lans are well advanced for a lazy, two-day tour which will involve meandering the lanes of Norfolk and Suffolk with a few stops at places of interest and lots of refreshment!

If you'd like to join us, do contact Chris Arnold (✉ christopher-arnold@sky.com) or Paul Scotten (✉ paul.scotten@btinternet.com).

On the August Bank Holiday weekend, we will also be joining our fellow members from the East Midlands region at the Earls Barton Transport Show – details on page 39.

---

## NORTH WEST REGION Mike Stanley [1234]

**N**ow that we're very much into 2024 we're busy with our plans for the coming year's activities. Firstly we aim to get our regional meetings back 'on track'.

We were very well looked-after for our Christmas meal at Huntley's Restaurant in Samlesbury, so we are returning there for our January lunchtime meeting. Keep an eye on our Northern Newsletters for details of future meetings.



### 60TH ANNIVERSARY PLANS: 6 MAY

We have selected the Gawsworth Hall Classic Car Show (Cheshire, SK11 9RN) as our anniversary event, which is held on the May Day Bank Holiday Monday. The show includes an informal concours and autojumble, and offers a relaxing day for

both owners and visitors. Keep an eye on our Northern Newsletter or contact us to find out more about how to book.

We aim to have a club presence at a range of events across our area, but there seems to be a trend for individuals to book in at many shows at this stage of the season, and only decide which to actually attend at the last minute. We hope that many of our members will enjoy using their Wolseleys during the year. It will soon be time to be 'starting up' again (though as I write this the gritter has just driven past) and it's not really that cold out in the garage, is it?

Participation in regional events is open to ALL our members; contact us for information on any event in our area that may be of interest and we'll happily welcome you.

---

## MIDLANDS REGION Graham Ryder [4746]

**M**idlands monthly meetings continue to be held north and south of Birmingham on the second Thursday of the month. Our next meeting will be at 7:30 pm on Thursday 8 February at The Royal Oak, Catshill. The next meeting at The Parson & Clerk Toby Carvery, Streetly will be on Thursday 14 March. Midlands members are welcome to attend either location. Just let us know in advance so that enough table space can be booked.

On 9 December, a party of 19 enjoyed a festive lunch at the Royal Oak, Catshill. Happy Birthday was sung to Harry Atkinson who was imminently becoming a nonagenarian.



The following regular meets are available during the Rally season but will not necessarily involve an official club presence:

- **9:30am Sundays 24 March, 12 May, 1 Sept:** Stratford Autojumble, Stratford Racecourse, Luddington Road (CV37 9SE). No advance bookings or club stands – pay on day £4 for driver and £6 each pre-booked passenger. Public entry £6 in advance or £7 on the day. Let Graham know if interested in attending any of the dates so entrants can try to rendezvous nearby soon after 9am to arrive and park together.
- **9am-4pm Bank Holiday Mondays 1 April, 6 and 27 May, 26 August:** A47 Auto-Jumble/Classic Vehicle Show, Thurlaston Showground (LE9 9JE), between Leicester and Hinckley. No pre-booking required. Free entry to classic car driver and one passenger. Public admission £5.
- **Sundays 7 April, 5 May, 2 June, 7 July, 4 August, 1 Sept, 6 Oct:** Middleton Motors Monthly. No pre-booking required at this tranquil spot – show vehicle admission £5 allows access to the Hall, gardens, grounds and Courtyard outlets. Show vehicles can enter from 9:30am. Open to general visitors 11am-4pm. Standard admission (non-show vehicles) adult £8, child £3 (under 5s free). Dogs welcome on leads. Refreshments available on site.

Other events with club presence:

- **Sun 7 April, 10am-4pm:** Hammerwich Pre-War Car Gathering, Hammerwich Cricket Club, Burntwood, Staffs (WS7 0JQ). Open to all vehicles built before WWII. Free to enter but advance registration is required (✉ klaxonhoard@gmail.com ☎ 07850 799791). Organised by the Austin Seven Online Club in collaboration with the Lions Club who will be happy to receive donations to support their charity work.
- **Sat 13 April:** Pride of Longbridge, Cofton Park, Longbridge, B'ham B31 2BQ. Club space will be booked at this annual event which celebrates the



Longbridge factory, its workers and the cars they produced. Gazebo offering shelter or shade and regalia sales will be available. Please advise if you wish to be included in the club stand.

- **Sun 28 April:** Chasewater Railway, Burntwood, Staffs. Invitation to attend the Birmingham Morris Minor rally. ✉ [birmingham.branch@mmoc.org.uk](mailto:birmingham.branch@mmoc.org.uk)
- **Sun 14 July:** BMC Day at British Motor Museum, Gaydon. Club space for up to 20 classic cars – entries will be co-ordinated by Graham.



## 60TH ANNIVERSARY PLANS: 7-8 SEPTEMBER

Two-day event based at Ludlow, Shropshire starting with FREE parking in Ludlow town centre on Saturday morning for classic cars to assemble in front of Ludlow College. After visiting the market, local shops/café's or the Castle (admission charge applies)

there will be a 45-mile road run calling at Much Wenlock and Bridgnorth where the Funicular Railway is reopening this year.

Accommodation and dinner for Saturday night is available at The Cliffe Hotel at Dinham, overlooking the Ludlow Castle and the River Teme on the outskirts of the town. All the currently available rooms are en-suite and being held for us up to 31 March. Bookings must be made through the Wolseley Register to obtain group rates (£230 standard double – five available / £260 superior double – three available per night based on two persons for dinner, bed and breakfast). A 25% deposit is required on booking, but would be refundable up to one month before the event if necessary. Other accommodation options are available locally, or extra nights can be booked at The Cliffe Hotel at the same rates.

Plans for Sunday include meeting at Ludlow Brewery and driving to the Shropshire Hills Discovery Centre at Craven Arms. The final programme will be issued in advance. We hope local members will join us on either or both days and members from other Regions are very welcome. The Register will provide rally boards for all participants. Please let Graham know ASAP [details on p34] if you are interested in joining in all or any part of the weekend, particular if accommodation is required.



The Midlands Programme of Events webpage ([www.wolseleyregister.co.uk/midlands-region-programme-of-events](http://www.wolseleyregister.co.uk/midlands-region-programme-of-events)) is constantly being added to, and application forms can be downloaded where applicable. Alternatively, ring Jenny and Graham for more information and/or forms by post.



## NORTH EAST REGION Peter Seaward [237]

As this is written, we are one week away from our New Year Lunch with 36 members and guests booked for what should be a most pleasant afternoon. Members are coming from Nottingham, Lincolnshire, Cheshire, Lancashire and the West Midlands plus three from Scotland and we really do appreciate your support.



**60TH ANNIVERSARY PLANS: 25-26 MAY.** We are thinking of spending Sat 25 May at the Scarborough Fair Collection (at Lebbeston/Cayton Bay between Scarborough and Filey) where the vehicle, organ and fairground attractions and rides are amazing and an excellent cafeteria supplies home-cooked food.

Sun 26 May is the Thornton Le Dale Show, and we have been kindly invited to view a member's vehicle collection and workshop near Pickering afterwards. We're looking at a hotel in the Malton/Pickering area if you wish to make a weekend of it – but attendance at either/both days is optional. Forms for Thornton Le Dale will be available shortly.

**27-28 JULY:** We're considering a road run over the Dales on Sat 27 July, ahead of the Ripon Show at the Racecourse on Sun 28 July. This would be another weekend opportunity, staying in the Boroughbridge area including an evening meal which local members would be welcome to join in.

Entry fees for both shows will be covered by the Register or Region, so you only need to pay for your meals and accommodation. We know the distances may be significant for some, and that we may have to restrict the Saturday activities to the local areas. Please let me know what you think (☎ 01132 623610). I need to know numbers so I can finalise arrangements, so please let me know if you are interested.

Our monthly lunch club meetings at The Bridge Hotel and Spa at Walshford near Wetherby resume in February on the first Tuesday of the month. All I need is some indication by phone/email that you intend to attend so we can book a big enough table! More details are on page 34.

In addition to the above, we can currently confirm these other local events:

- **Sat 13 April:** Spring Collectors Fair at Pudsey 10am to 4pm.
- **Sun 21 April (Drive it Day):** Joining our friends at the York HVG with a run from York racecourse to Sherburn and the joint attractions of the Aero Club AND The Motorist – subject to the weather. No forms, just join in!
- **Sun 30 June:** Northallerton Vintage and Prewar Car Show. Space for 250-300 cars (up to 1949) at this free event on the High Street. To register, please email your vehicle details to ✉ [prewar.carshow@btinternet.com](mailto:prewar.carshow@btinternet.com).